

FUEL SELECTOR CONTROLS - MAINTENANCE PRACTICES

1. General

- A. The fuel flow from the left and right fuel tanks is controlled by the following components: fuel selector, two knobs, two control cables, and two interconnects. The fuel selector panel is installed in the overhead console. The panel is placarded as follows: FUEL TANK SELECTORS; ON LEFT OFF and ON RIGHT OFF. The interconnects in each wing are adjacent to the fuel shutoff valves. The interconnects are attached to the shutoff valves with cables routed through the wings to fuel select knobs in the overhead console. Whenever a knob is placed in the ON or OFF position, or any intermediate setting, the corresponding interconnect moves both shutoff valves simultaneously to the selected position.

2. Fuel Selector Controls Removal/Installation

- A. Remove Fuel Selector Controls (Refer to Figure 201).

- (1) Remove access panel on bottom of wings adjacent to fuselage, and open zippers in headliner.
- (2) Remove safety wire (23), screws (19) and plates (18). Detach knobs (17).
- (3) If installed remove the LED panel. Refer to Overhead Console LED Panels - Removal/Installation.
- (4) Remove screws (16), detach controls cover (15) from bracket (20).
- (5) Remove cotter pin (14), washer (13), and pin (12). Detach control terminal (4) from lever (10).
- (6) Remove safety wire and remove roll pin (11) and detach lever (10) from shaft (9).
- (7) Remove screws (7), detach retainer (6), shaft (9), and washers (8) and (22) from bracket (20).
- (8) Remove safety wire (21) from brackets (3). Detach cable (1) from support (2).
- (9) Remove cotter pin (37), washer (36), and pin (35). Detach terminal (35) from interconnect link (40).
- (10) Remove cotter pins (34), washers (33), and pins (32). Detach interconnect (29) from handles (30).

- B. Install Fuel Selector Controls (Refer to Figure 201).

NOTE: Before installing fuel selector controls handles (30) on fuel shutoff valves (31) must be correctly indexed by moving both handles (30) forward until they firmly contact index screws (42).

- (1) Attach interconnect (29) to handles (30). Replace pins (32), washers (33), and cotter pins (34).
- (2) Attach cable (1) to supports (2). Replace safety wire (21) on supports (2) and brackets (3).
- (3) Install shaft (9) and washer (8) on retainer (6). Position washer (22), shaft (9), washer (8), and retainer (6) on bracket (20). Replace screws (7).
- (4) Attach lever (10) to shaft (9). Align holes in shaft (9) and lever (10), replace roll pin (11) and safety wire.
- (5) Attach terminal (4) to lever (10). Replace pin (12).

NOTE: Do not replace washer (13) and cotter pin (14), since cable (1) may have to be shortened or lengthened during indexing.

- (6) Attach controls cover (15) to bracket (20). Replace screws (16).
- (7) If removed install the LED panel. Refer to Overhead Console LED Panels - Removal/Installation.

- (8) Attach knobs (17) to shafts (9). Replace plates (18), screws (19), and safety wire (23).

NOTE: Place knob (17) in the ON position before proceeding to the next step.

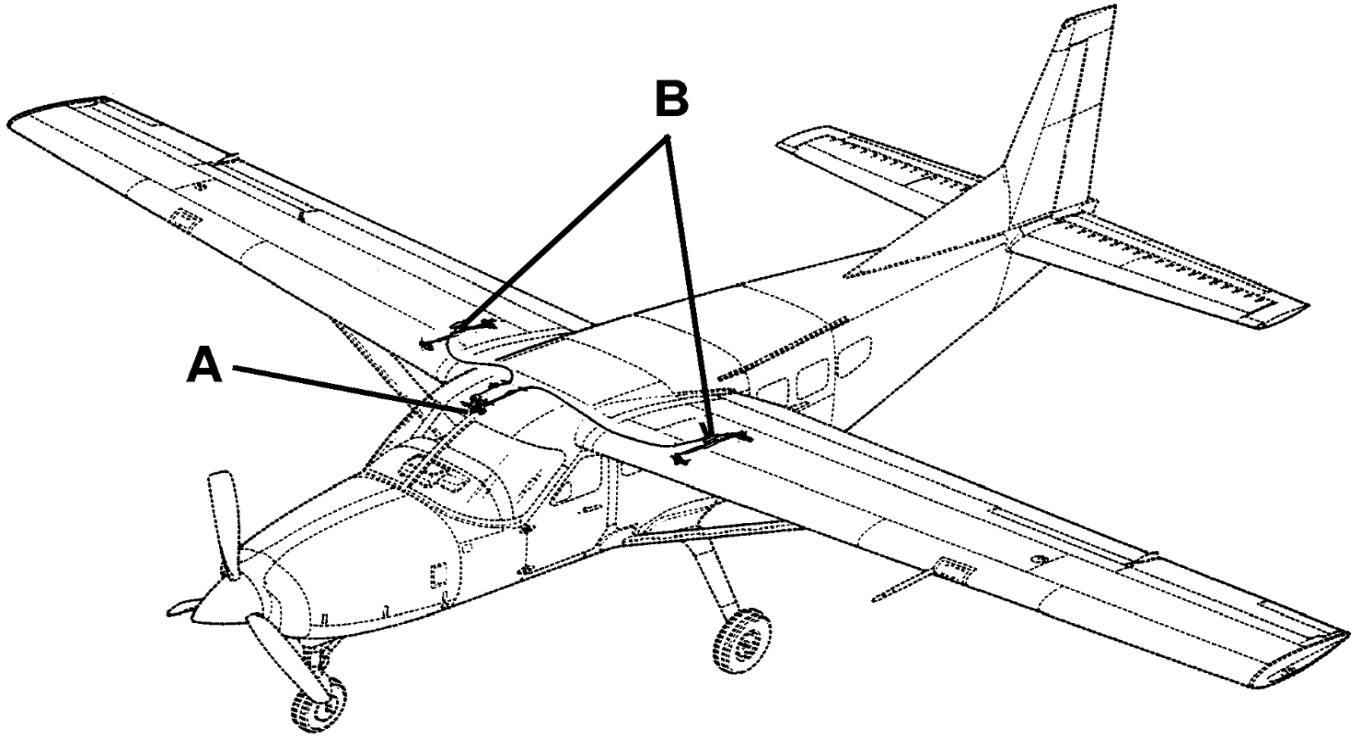
- (9) Attach terminal (26) to aft interconnect link (40).

NOTE: Ensure that handles (30) are fully forward and knob (17) is located in ON position. It may be necessary to loosen nut (27) and turn terminal (26) in or out on fuel selector cable shaft to align holes in terminal (26) with hole in aft interconnect link (40). If more than two turns in either direction are required, remove pin (12), loosen nut (5) and turn terminals (4) and (26) equally.

- (10) Replace pin (35), washer (36), and cotter pin (37) and tighten nut (27).
- (11) IF NECESSARY - Replace pin (12), washer (13), and cotter pin (14), tighten nut (5).
- (12) Functional check system by placing handle (17) in ON and OFF positions and verifying that handles (30) contact corresponding stops (42) and (44).
- (13) Replace access panels on bottom of wings adjacent to fuselage. Close zippers in headliner.

Figure 201 : Sheet 1 : Fuel Selector Controls

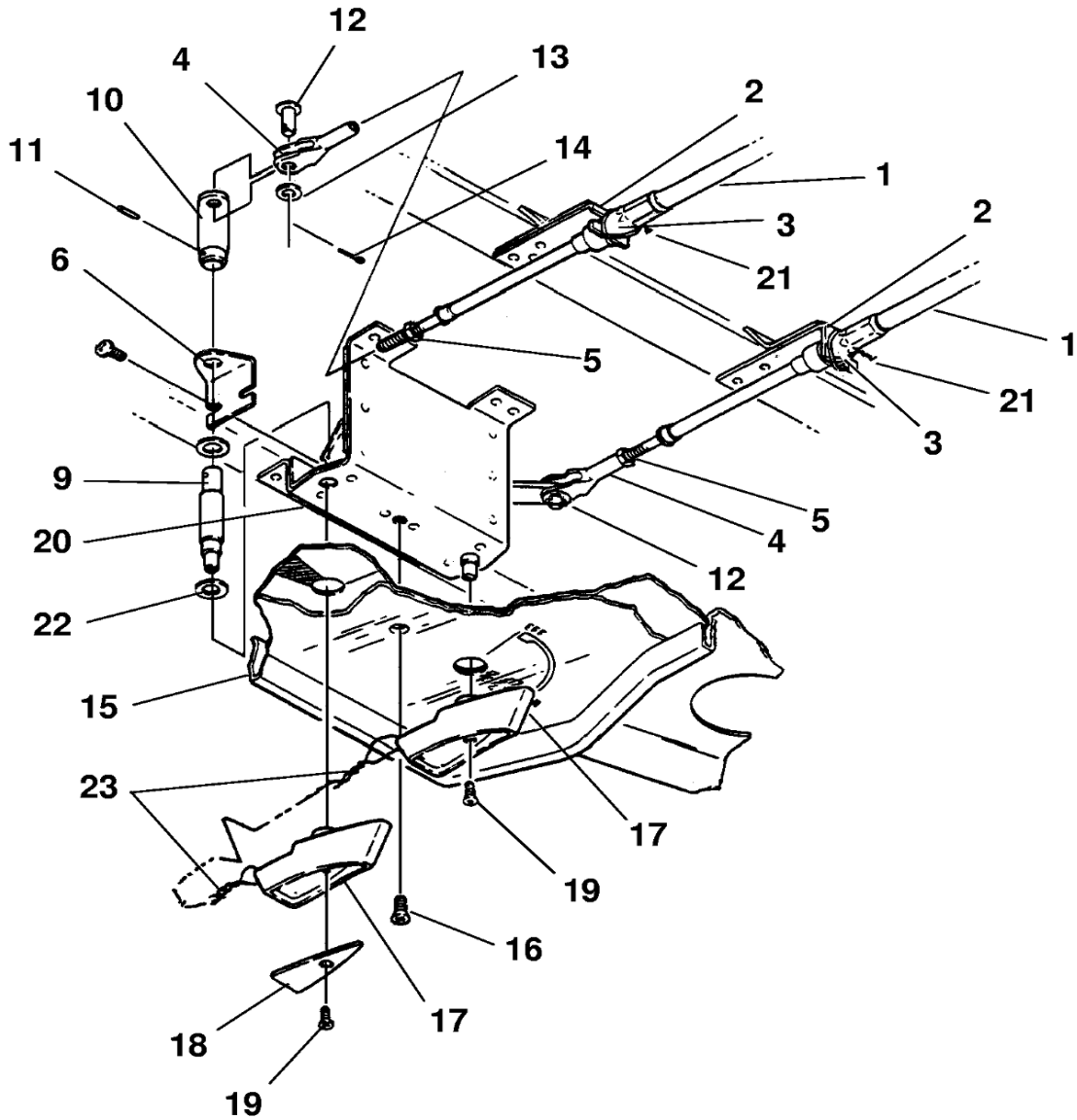
A22455



26161009

Figure 201 : Sheet 2 : Fuel Selector Controls

A22456



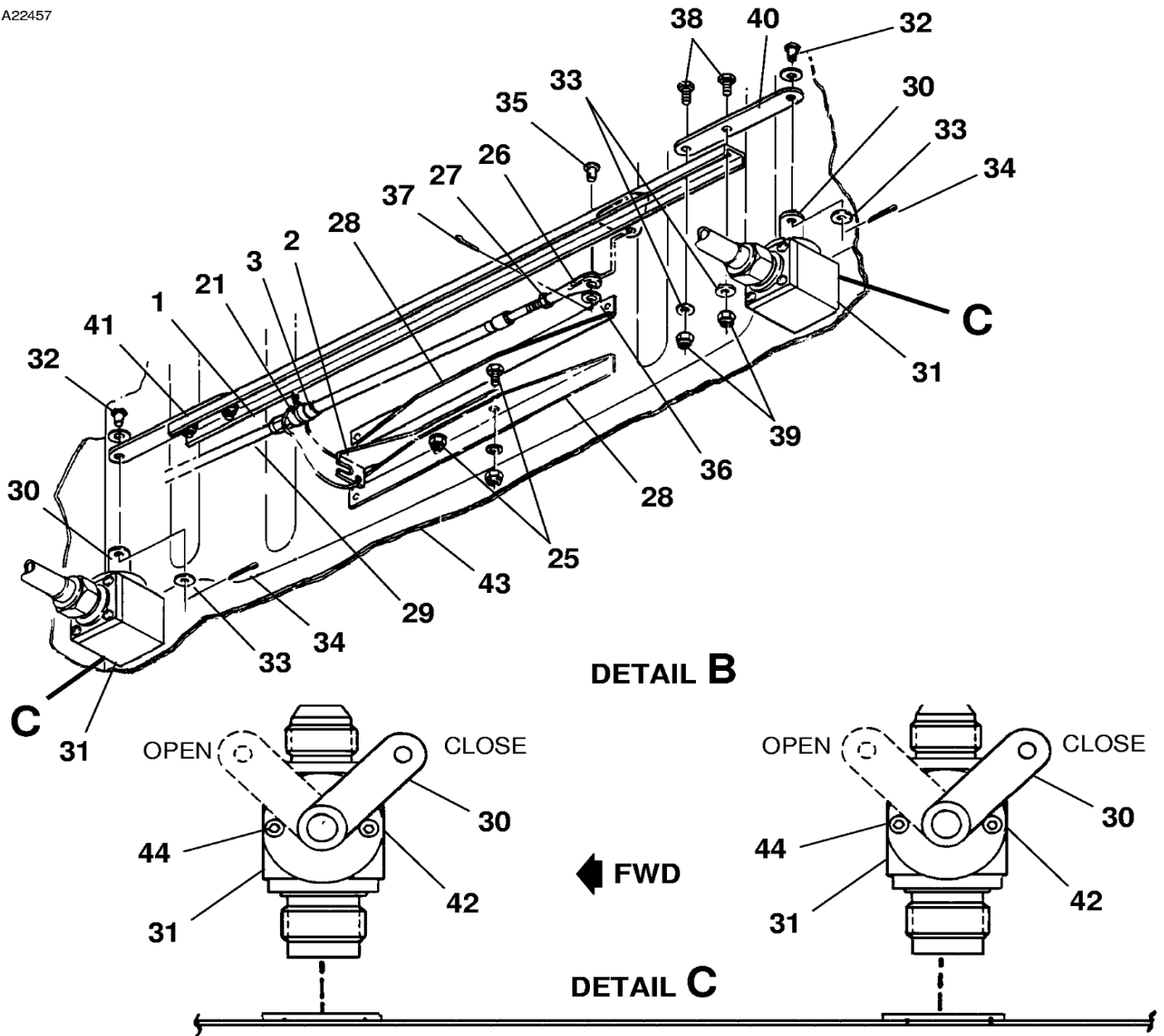
DETAIL A

- | | |
|------------------------|--------------------|
| 1. FUEL SELECTOR CABLE | 14. COTTER PIN |
| 2. SUPPORT | 15. CONTROLS COVER |
| 3. BRACKET | 16. SCREW |
| 4. TERMINAL | 17. KNOB |
| 5. NUT | 18. PLATE |
| 6. RETAINER | 19. SCREW |
| 9. SHAFT | 20. BRACKET |
| 10. LEVER | 21. SAFETY WIRE |
| 11. ROLL PIN | 22. WASHER |
| 12. PIN | 23. SAFETY WIRE |
| 13. WASHER | |

A26162007

Figure 201 : Sheet 3 : Fuel Selector Controls

A22457



- 1. FUEL SELECTOR CABLE
- 2. SUPPORT
- 3. BRACKET
- 21. SAFETY WIRE
- 25. SCREW
- 26. TERMINAL
- 27. NUT
- 28. INTERCONNECT SUPPORT
- 29. INTERCONNECT
- 30. HANDLE
- 31. FUEL SHUTOFF VALVE
- 32. PIN

- 33. WASHER
- 34. COTTER PIN
- 35. PIN
- 36. WASHER
- 37. COTTER PIN
- 38. BOLT
- 39. NUT
- 40. AFT INTERCONNECT LINK
- 41. FORWARD INTERCONNECT LINK
- 42. INDEX SCREW
- 43. FUEL BULKHEAD
- 44. INDEX SCREW

B26162003A
 C26161019